



GCAP<sup>®</sup>, OFFSET 30°  
FEMALE AND MALE ELECTRODES

**FEATURES AND SPECIFICATIONS**

**Features and Benefits**

- Low cost electrode system
- Applications requiring frequent changeovers
- Available in RWMA 4-7 tapers
- Large weld face
- Works with all industry standard shanks
- Caps do not require dressing
- Long life with controlled wear design
- Excellent on galvanized material
- Available in CMW<sup>®</sup>3 material
- Angled offsets can get in hard to reach areas

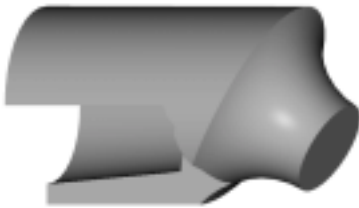
- Male version provides optimal cooling
- Female version allows “dry change when on blind hole shanks
- Stepper controlled weld schedule recommended (see page 142)

**Use With**

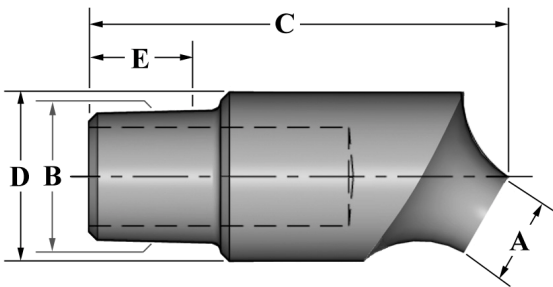
- CMW shanks MP30XXX or 30XXX (Male or Female)
- All CMW holders

**Mechanical**

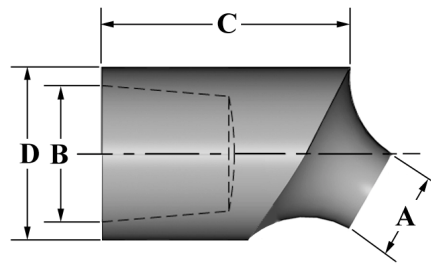
- Electrical conductivity up to 80% IACS
- Rockwell hardness up to 83 HRB



**MALE**



**FEMALE**



**ORDERING INFORMATION AND DIMENSIONS**

STYLE	RWMA	ORDER NO.	DIMENSIONS (in inches)					USE WITH
		MATERIAL	WELD FACE	GAGE LINE DIA.	LENGTH	O.D.	GAGE LENGTH	SHANK
		CMW <sup>®</sup> 3 CLASS 2	A	B	C	D	E	
MALE	4	MGD244-3001	0.250	0.3745	1.125	0.500	0.285	301XX
	5	MGD254-3001	0.250	0.4145	1.250	0.625	0.390	302XX
	5	MGD255-3001	0.313	0.4145	1.250	0.625	0.390	302XX
	6	MGD266-3001	0.375	0.5005	1.625	0.750	0.500	304XX
FEMALE	4	MPGD244-3001	0.250	0.3945	0.840	0.500	N/A	MP301XX
	5	MPGD254-3001	0.250	0.4951	0.880	0.625		MP302XX
	5	MPGD255-3001	0.313	0.4951	0.880	0.625		MP302XX
	6	MPGD266-3001	0.375	0.6255	1.000	0.750		MP304XX