



FEATURES AND SPECIFICATIONS

Features and Benefits

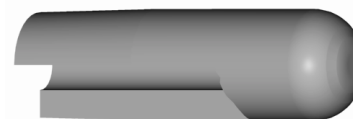
- Long lasting, heavy duty electrode
- Can be used in many job shop applications
- Works with all industry standard holders
- Can be redressed many times
- Available in 3 standard materials
- "B" Nose used on coated materials and standard applications
- Options larger diameter available upon request

Use With

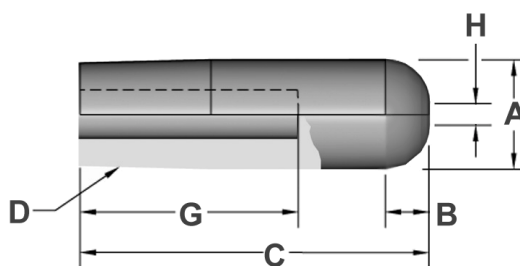
- 4RW or 5RW CMW Holders

Mechanical

- Electrical conductivity up to 90% IACS
- Rockwell hardness up to 100 HRB



ELECTRODES
STRAIGHT



ORDERING INFORMATION AND DIMENSIONS

RWMA	Overall Length	Hole Depth	Material / Part No.			Nose Length	Major Dia.	Face Dia.
			CMW®28 Class 1	CMW®3 Class 2	CMW®100 Class 3			
D	C	G				B	A	H
4	1	5/8	1111	3111	5111	13/64	.482	3/16
	1-1/4	3/4	1112	3112	5112	1/4		
	1-1/2	1	1113	3113	5113			
	1-3/4	1-1/4	1114	3114	5114			
	2	1-1/2	1115	3115	5115			
	2-1/4	1-3/4	1116	3116	5116			
	2-1/2	2	1117	3117	5117			
	2-3/4	2-1/4	1118	3118	5118			
	3	2-1/2	1119	3119	5119	1/4		
	3-1/4	2-3/4	11112	31112	51112			
	3-1/2	3	11114	31114	51114			
	3-3/4	3-1/4	11116	31116	51116			
4	3-1/2	11118	31118	51118	1/4			

RWMA	Overall Length	Hole Depth	Material / Part No.			Nose Length	Major Dia.	Face Dia.
			CMW®28 Class 1	CMW®3 Class 2	CMW®100 Class 3			
D	C	G				B	A	H
5	1-1/4	3/4	1122	3122	5122	3/8	.625	1/4
	1-1/2	3/4	1123	3123	5123			
	1-3/4	1	1124	3124	5124			
	2	1-1/4	1125	3125	5125	3/8		
	2-1/4	1-1/2	1126	3126	5126			
	2-1/2	1-3/4	1127	3127	5127			
	2-3/4	2	1128	3128	5128			
	3	2-1/4	1129	3129	5129	3/8		
	3-1/4	2-1/2	11212	31212	51212			
	3-1/2	2-3/4	11214	31214	51214			
	3-3/4	3	11216	31216	51216			
	4	3-1/4	11218	31218	51218	3/8		
	4-1/4	3-1/2	11220	31220	51220			
	4-1/2	3-3/4	11222	31222	51222			