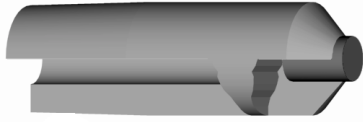




STRAIGHT ELECTRODES, CENTERED INSERT NOSE  
ELKON® FACED

**FEATURES AND SPECIFICATIONS**



**Features and Benefits**

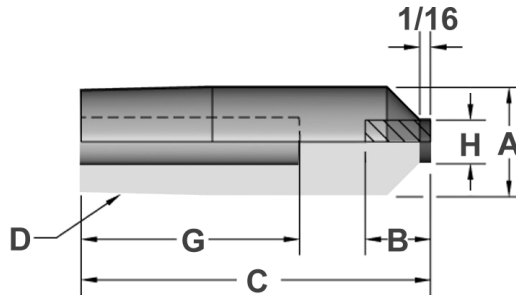
- ELKON® facings are used for projection, crosswire, brazing and non-ferrous welding
- Long lasting, heavy duty electrode
- Can be used in many job shop applications
- Works with all industry standard holders
- Can be redressed many times

**Use With**

- 4RW or 5RW CMW Holders

**Mechanical**

- Electrical conductivity up to 30% IACS
- Rockwell hardness depending on material
- 39 HRC



**ORDERING INFORMATION AND DIMENSIONS**

RWMA	PART NO.		MAJOR DIA.	ELKON® LENGTH	OVERALL LENGTH	HOLE DEPTH	FACE DIA.
	MATERIAL						
	ELKON® 100M	ELKON® 100W					
D			A	B	C	G	H
4	871050	971050	.482	3/8	2	1-1/2	3/16
5	872050	972050	.625			1-1/4	1/4

ELECTRODES  
STRAIGHT