



FEATURES AND SPECIFICATIONS

Features and Benefits

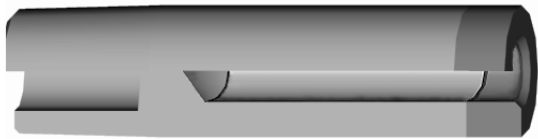
- Elkonite® 10W3 faced CMW®3 material
- Insulation sleeve made of anodized aluminum treated to 55 HRC on both I.D. & O.D. for wear resistance

Use With

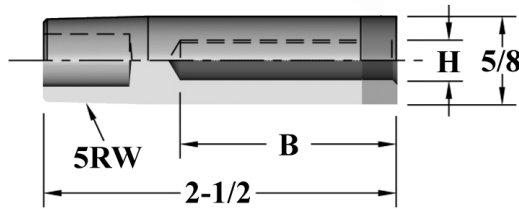
- All tapered electrode holders

Mechanical

- Accepts external cooling chambers*



*External Electrode Cooling Chamber



ELECTRODES
STUD/NUT

ORDERING INFORMATION AND DIMENSIONS

TAPER	SCREW THREAD SIZE	INSULATION	ASSEMBLED ELECTRODE PART NO.			USE WITH COOLING CHAMBER*	
		I.D. (H)					
RWMA 5	#4	DEPTH (B)	.375	.750	1.125	18-1340	
		.116	16-3724-1161	16-3724-1162	16-3724-1163		
	#5	.132	16-3724-1321	16-3724-1322	16-3724-1323		
		DEPTH (B)	.500	1.00	1.50		
	#6	.140	16-3724-1401	16-3724-1402	16-3724-1403		
		--	.150	16-3724-1501	16-3724-1502		16-3724-1503
		--	.157	16-3724-1571	16-3724-1572		16-3724-1573
		#8	.169	16-3724-1691	16-3724-1692		16-3724-1693
	#10	DEPTH (B)	.750	1.50	-		
		.191	16-3724-1911	16-3724-1912			
		#12	.220	16-3724-2201	16-3724-2202		
		.250	.254	16-3724-2541	16-3724-2542		