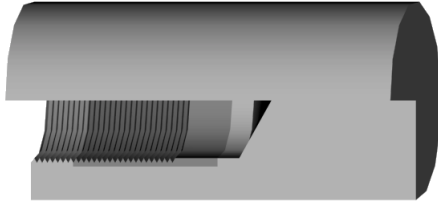




THREADED ELECTRODES, FEMALE

**FEATURES AND SPECIFICATIONS**



**Features and Benefits**

- CMW®3 material
- Heavy wall construction for good heat dissipation
- Threaded for good conductivity

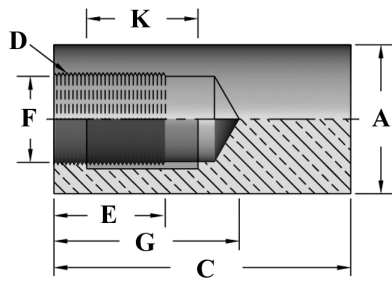
**Use With**

- Threaded adapters

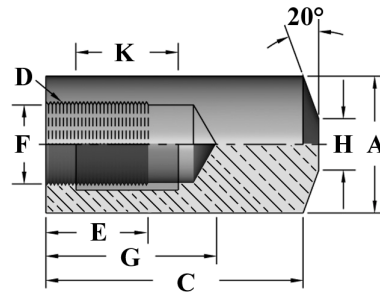
**Mechanical**

- Wrench flats

**FLATFACE**



**TRUNCATED FACE**



**ORDERING INFORMATION AND DIMENSIONS**

ELECTRODES  
SPECIALTY

FACE	DIMENSIONS (in inches)			DIMENSIONS (in inches)						
	WELDING FACE DIA.	MAJOR DIA.	PART NO.	THREAD SIZE	OVERALL LENGTH	THREAD DEPTH	WATER HOLE DEPTH	WATER HOLE DIA.	OVER WRENCH FLATS	WRENCH FLAT LENGTH
	H	A		D	C	E	G	F	K	
FLAT	1	1	336508	5/8-18	2	3/4	1-1/4	37/64	7/8	3/4
	1-1/4	1-1/4	336510						1	3/4
	1-1/2	1-1/2	336512						1-1/4	7/8
TRUNCATED	3/8	1	326508	5/8-18	2	3/4	1-1/4	37/64	7/8	3/4
	1/2	1-1/4	326510						1	3/4
	5/8	1-1/2	326512						1-1/4	7/8