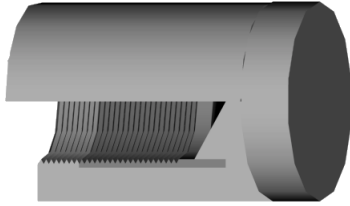




THREADED ELECTRODES,
ELKONITE® FACED MALE AND FEMALE

FEATURES AND SPECIFICATIONS



Features and Benefits

- Elkonite® 10W3 faced CMW®3 material
- Heavy wall construction for good heat dissipation
- Threaded for good conductivity

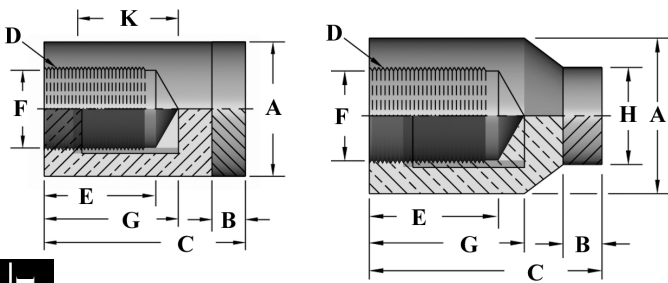
Use With

- Threaded electrodes holders and adapters

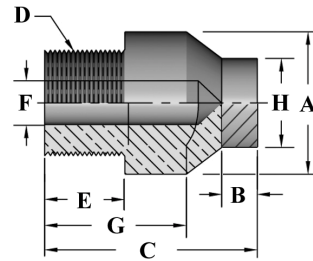
Mechanical

- Wrench flats

FEMALE - FLAT/CENTERED FACES



MALE - CENTERED FACE



ORDERING INFORMATION AND DIMENSIONS

ELECTRODES
SPECIALTY

STYLE	FACE	DIMENSIONS (in inches)		PART NO.	DIMENSIONS (in inches)							
		H WELDING FACE DIA.	A MAJOR DIA.		D THREAD SIZE	C OVERALL LENGTH	E THREAD DEPTH	G WATER HOLE DEPTH	F WATER HOLE DIA.	OVER WRENCH FLATS	K WRENCH FLAT LENGTH	B ELKONITE THICKNESS
FEMALE	FLAT	1	1	636308	5/8-18	1-1/2	3/4	1	37/64	7/8	1/2	1/4
		1-1/4	1-1/4	636310						1		
		1-1/2	1-1/2	636312						1-1/4	3/4	
	CENTERED	5/8	1	626308						7/8	1/2	
			1-1/4	626310						1		
MALE	CENTERED	1/2	7/8	620307	5/8-11	1-1/4	15/32	7/8	5/16	3/4	N/A	1/4
			3/4	625206						5/8		3/16
		5/8	1	625308						3/4-10		1-5/8