

CAPS, RADIUS "F" NOSE
MALE AND FEMALE ELECTRODES



FEATURES AND SPECIFICATIONS

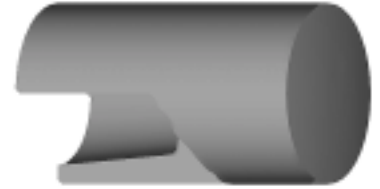
Features and Benefits

- Low cost electrode system
- Applications requiring frequent changeovers
- Available in RWMA 4-7 tapers
- Large Weld Face
- Works with all industry standard shanks
- Caps can be redressed
- Available in CMW®28, CMW®3, or CMW®328 material
- "F" Nose used for aluminum and some coated materials

- Male version provides optimal cooling
- Female version allows "dry" change when on blind hole shanks

Use With

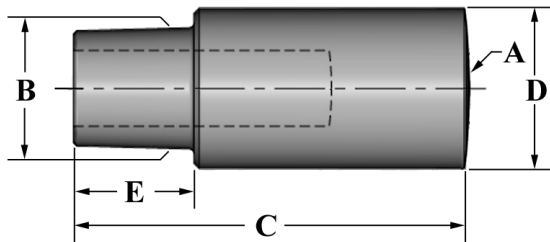
- CMW Shanks (Male or Female)
- All CMW Holders
- Dressing Tools



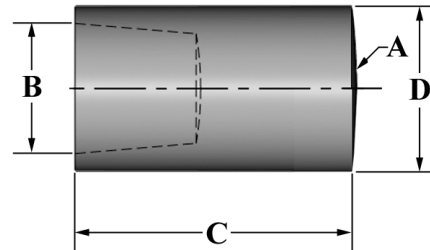
Mechanical

- Electrical conductivity up to 90% IACS
- Rockwell hardness up to 83 HRB

MALE



FEMALE



ORDERING INFORMATION AND DIMENSIONS

STYLE	RWMA	ORDER NO.			DIMENSIONS (in inches)					USE WITH
		MATERIAL			SPHERICAL RADIUS A	GAGE LINE DIA. B	LENGTH C	O.D. D	GAGE LENGTH (MALE CAPS) E	SHANK
		CMW®28 CLASS 1	CMW®3 CLASS 2	CMW®328 CLASS 2						
MALE	4	MF14Z	MF24	MF24Z	2.00	0.3745	1.125	0.500	0.285	301XX
	5	MF15Z	MF25	MF25Z	2.00	0.4145	1.250	0.625	0.390	302XX
	6	MF16Z	MF26	MF26Z	4.00	0.5005	1.625	0.750	0.500	304XX
FEMALE	4	MPF14Z	MPF24	MPF24Z	2.00	0.3945	0.840	0.500	N/A	MP301XX
	5	MPF15Z	MPF25	MPF25Z	2.00	0.4951	0.880	0.625		MP302XX
	6	MPF16Z	MPF26	MPF26Z	4.00	0.6255	1.000	0.750		MP304XX

*Taper Length for RWMA 4/5/6, Male = 3/8", 1/2", 5/8", Female = 7/8", 3/4", 7/8"