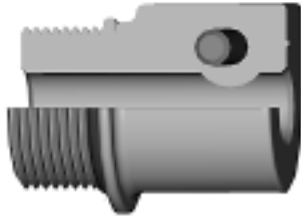




ADAPTERS
 MALE THREAD TO FEMALE TAPER STRAIGHT CLAMPING TYPE

FEATURES AND SPECIFICATIONS



Features and Benefits

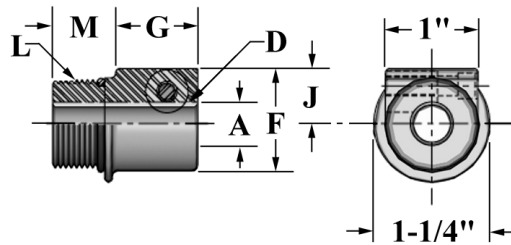
- Straight adapter with mechanical electrode holding mechanism

Use With

- Series 100, 200, 300, and 600 holders
- Can use straight or tapered electrodes

Mechanical

- Use with RWMA 5 electrodes



ORDERING INFORMATION AND DIMENSIONS

MALE THREAD		FEMALE TAPER		ASSEMBLY PART NO.	DIMENSIONS (in inches)		
DIMENSIONS (in inches)					F OVERALL HEAD HEIGHT	G HEAD DIAMETER	J C.L. BARREL TO C.L. OF TAPER
L SIZE THREAD	M LENGTH	D SIZE	A MAJOR DIA.				
7/8-14	9/16	5RW	0.625	18-768	1-1/4	3/4 DIA.	3/4
1-14	3/4			18-784			

ADAPTERS