

GCAP®, STRAIGHT
FEMALE AND MALE ELECTRODES



GCAPS®

FEATURES AND SPECIFICATIONS

Features and Benefits

- Low cost electrode system
- Applications requiring frequent changeovers
- Available in RWMA 4-7 tapers
- Large weld face
- Works with all industry standard shanks
- Caps do not require dressing
- Long life with controlled wear design
- Excellent on galvanized material
- Available in CMW®3 material
- Male version provides optimal cooling

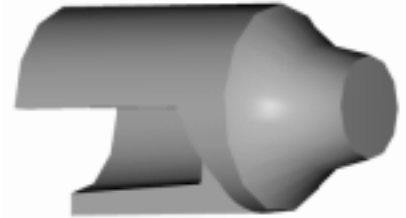
- Female version allows “dry” change when on blind hole shanks
- Stepper controlled weld schedule recommended (see Page 142)

Use With

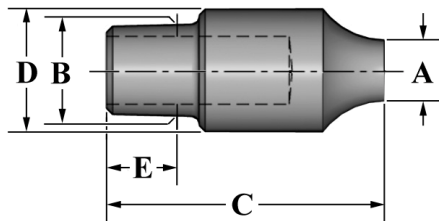
- CMW shanks (Male or Female)
- All CMW holders

Mechanical

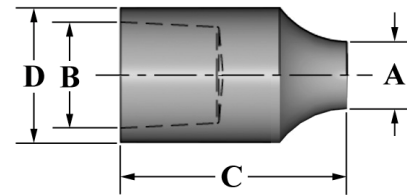
- Electrical conductivity up to 80% IACS
- Rockwell hardness up to 83 HRB



MALE



FEMALE



ORDERING INFORMATION AND DIMENSIONS

| STYLE | RWMA | ORDER NO. | DIMENSIONS (in inches) | | | | | USE WITH |
|--------|------|---------------|------------------------|----------------|--------|-------|-------------|----------|
| | | MATERIAL | WELD FACE | GAGE LINE DIA. | LENGTH | O.D. | GAGE LENGTH | SHANK |
| | | CMW®3 CLASS 2 | A | B | C | D | E | |
| MALE | 4 | MG244 | 0.250 | 0.3745 | 1.125 | 0.500 | 0.285 | 301XX |
| | 5 | MG254 | 0.250 | 0.4145 | 1.250 | 0.625 | 0.390 | 302XX |
| | 5 | MG255 | 0.313 | 0.4145 | 1.250 | 0.625 | 0.390 | 302XX |
| | 6 | MG266 | 0.375 | 0.5005 | 1.625 | 0.750 | 0.500 | 304XX |
| FEMALE | 4 | MPG244 | 0.250 | 0.3945 | 0.840 | 0.500 | N/A | MP301XX |
| | 5 | MPG254 | 0.250 | 0.4951 | 0.880 | 0.625 | | MP302XX |
| | 5 | MPG255 | 0.313 | 0.4951 | 0.880 | 0.625 | | MP302XX |
| | 6 | MPG266 | 0.375 | 0.6255 | 1.000 | 0.750 | | MP304XX |