



**FEATURES AND SPECIFICATIONS**

**Features and Benefits**

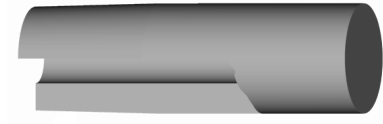
- Long lasting, heavy duty electrode
- Can be used in many job shop applications
- Works with all industry standard holders
- Can be redressed many times
- Available in 3 standard materials
- "C" Nose used for heat balancing or cosmetic welds
- Option larger diameter available upon request

**Use With**

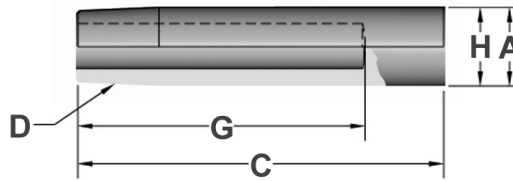
- 4RW or 5RW CMW Holders

**Mechanical**

- Electrical conductivity up to 90% IACS
- Rockwell hardness up to 100 HRB



ELECTRODES  
STRAIGHT



**ORDERING INFORMATION AND DIMENSIONS**

RWMA D	OVERALL LENGTH C	HOLE DEPTH G	ORDER NO.			MAJOR DIA. A	FACE DIA. H
			MATERIAL				
			CMW®28 Class 1	CMW®3 Class 2	CMW®100 Class 3		
4	1	5/8	1311	3311	5311	.482	.482
	1-1/4	3/4	1312	3312	5312		
	1-1/2	1	1313	3313	5313		
	1-3/4	1-1/4	1314	3314	5314		
	2	1-1/2	1315	3315	5315		
	2-1/4	1-3/4	1316	3316	5316		
	2-1/2	2	1317	3317	5317		
	2-3/4	2-1/4	1318	3318	5318		
	3	2-1/2	1319	3319	5319		
	3-1/4	2-3/4	13112	33112	53112		
	3-1/2	3	13114	33114	53114		
	3-3/4	3-1/4	13116	33116	53116		
	4	3-1/2	13118	33118	53118		

RWMA D	OVERALL LENGTH C	HOLE DEPTH G	ORDER NO.			MAJOR DIA. A	FACE DIA. H
			MATERIAL				
			CMW®28 Class 1	CMW®3 Class 2	CMW®100 Class 3		
5	1-1/4	3/4	1322	3322	5322	.625	.625
	1-1/2	3/4	1323	3323	5323		
	1-3/4	1	1324	3324	5324		
	2	1-1/4	1325	3325	5325		
	2-1/4	1-1/2	1326	3326	5326		
	2-1/2	1-3/4	1327	3327	5327		
	2-3/4	2	1328	3328	5328		
	3	2-1/4	1329	3329	5329		
	3-1/4	2-1/2	13212	33212	53212		
	3-1/2	2-3/4	13214	33214	53214		
	3-3/4	3	13216	33216	53216		
	4	3-1/4	13218	33218	53218		
	4-1/4	3-1/2	13220	33220	53220		
	4-1/2	3-3/4	13222	33222	53222		