



FEATURES AND SPECIFICATIONS

Features and Benefits

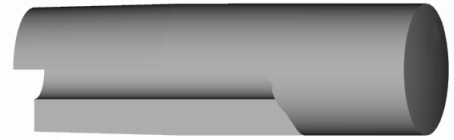
- Long lasting, heavy duty electrode
- Can be used in many job shop applications
- Works with all industry standard holders
- Can be redressed many times
- Available in 3 standard materials
- "F" Nose used for aluminum and coated materials
- Options other sizes available upon request

Use With

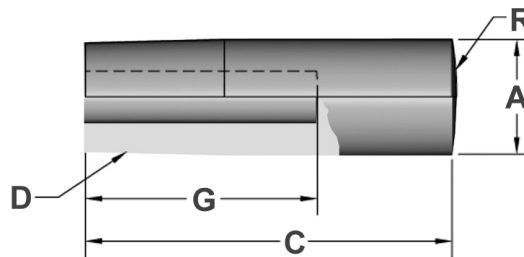
- 5RW CMW Holders

Mechanical

- Electrical conductivity up to 90% IACS
- Rockwell hardness up to 100 HRB



ELECTRODES
STRAIGHT



ORDERING INFORMATION AND DIMENSIONS

RWMA D	OVERALL LENGTH C	PART NO.			MAJOR DIA. A	HOLE DEPTH G	SPERICAL RADIUS H
		MATERIAL					
		CMW®28 Class 1	CMW®3 Class 2	CMW®100 Class 3			
5	1-1/2	1523	3523	5523	.625	3/4	2
	2	1525	3525	5525		1-1/4	
	2-1/2	1527	3527	5527		1-3/4	
	3	1529	3529	5529		2-1/4	
	4	15218	35218	55218		3-1/4	
	1-1/2	1623	3623	5623	.625	3/4	10
	2	1625	3625	5625		1-1/4	
	2-1/2	1627	3627	5627		1-3/4	
	3	1629	3629	5629		2-1/4	
	4	16218	36218	56218		3-1/4	
	2	1825	3825	5825	.625	1-1/4	3
	3	1829	3829	5829		2-1/4	
	2	1925	3925	5925	.625	1-1/4	4
	3	1929	3929	5929		2-1/4	