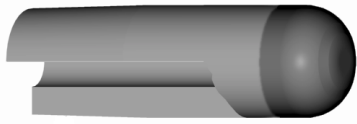




STRAIGHT ELECTRODES, DOME NOSE
ELKONITE® AND ELKON® FACED

FEATURES AND SPECIFICATIONS



Features and Benefits

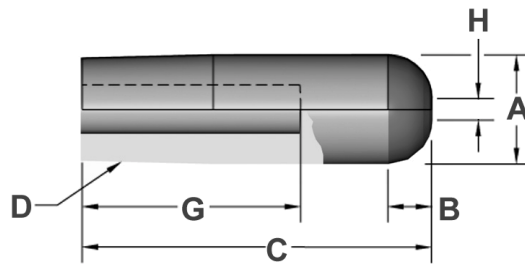
- ELKONITE® or ELKON® facings are used for projection, crosswire, resistance brazing, high pressure and heat applications
- Long lasting, heavy duty electrode
- Can be used in many job shop applications
- Works with all industry standard holders
- Can be redressed many times

Use With

- 4RW or 5RW CMW Holders

Mechanical

- Electrical conductivity up to 50% IACS
- Rockwell hardness up to 100 HRC



ORDERING INFORMATION AND DIMENSIONS

RWMA	PART NO.			MAJOR DIA.	ELKONITE® or ELKON® LENGTH	OVERALL LENGTH	HOLE DEPTH	FACE DIA.
	MATERIAL							
D	ELKONITE® 10W3	ELKON® 100M	ELKON® 100W	A	B	C	G	H
4	611050	811050	911050	.482	3/16	2	1-1/2	1/8
5	612050	812050	912050	.625	1/4	2	1-1/2	1/8

ELECTRODES
STRAIGHT