



CAPS, POINTED ("A" NOSE) MALE AND FEMALE ELECTRODES

FEATURES AND SPECIFICATIONS

Features and Benefits

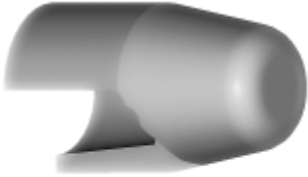
- Low cost electrode system
- Applications requiring frequent changeovers
- Available in RWMA 4-7 tapers
- Large weld face
- Works with all industry standard shanks
- Caps can be redressed
- Available in CMW®28, CMW®3, or CMW®328 material
- "A" Nose - Good in most applications
- Male version has optimal cooling
- Female version allows "dry" change when on blind hole shanks

Use With

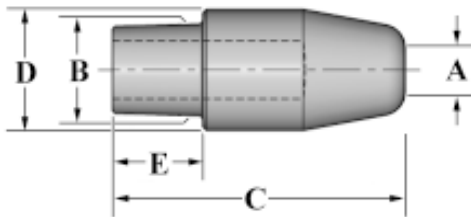
- CMW shanks (Male and Female)
- All CMW holders
- Dressing tools

Mechanical

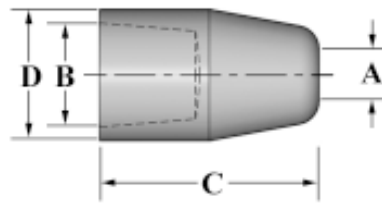
- Electrical conductivity up to 90% IACS
- Rockwell Hardness up to 83 HRB



MALE



FEMALE



ORDERING INFORMATION AND DIMENSIONS

STYLE	RWMA	ORDER NO.			DIMENSIONS (in inches)					USE WITH
		MATERIAL			WELD FACE A	GAGE LINE DIA. B	LENGTH C	O.D. D	GAGE LENGTH (MALE CAPS) E	SHANK
		CMW®28 CLASS 1	CMW®3 CLASS 2	CMW®328 CLASS 2						
MALE	4	MA14Z	MA24	MA24Z	0.188	0.3745	1.125	0.500	0.285	301XX
	5	MA15Z	MA25	MA25Z	0.250	0.4145	1.250	0.625	0.390	302XX
	6	MA16Z	MA26	MA26Z	0.313	0.5005	1.625	0.750	0.500	304XX
FEMALE	4	MPA14Z	MPA24	MPA24Z	0.188	0.3945	0.840	0.500	N/A	MP301XX
	5	MPA15Z	MPA25	MPA25Z	0.250	0.4951	0.880	0.625		MP302XX
	6	MPA16Z	MPA26	MPA26Z	0.313	0.6255	1.000	0.750		MP304XX

*Taper Length for RWMA 4/5/6, Male = 3/8", 1/2", 5/8", Female = 7/8", 3/4", 7/8"