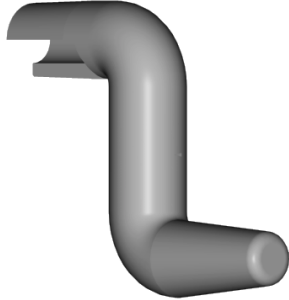




FEATURES AND SPECIFICATIONS



Features and Benefits

- Very strong bent electrodes for higher force applications
- Bent electrodes are for hard to reach locations
- Long lasting, heavy duty electrode
- Can be used in many job shop applications
- Works with all industry standard holders
- Can be redressed many times

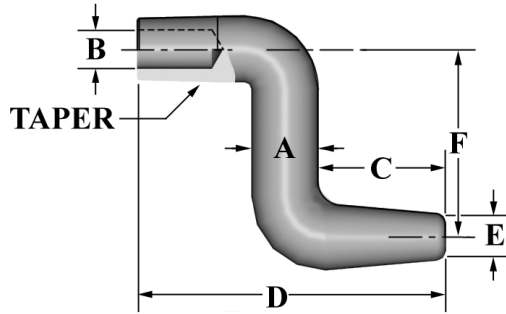
Use With

- Fits 5RW CMW standard holders

Mechanical

- Electrical conductivity up to 80% IACS
- Rockwell hardness up to 83 HRB

ELECTRODES
BENT



ORDERING INFORMATION AND DIMENSIONS

TAPER	PART NO.	MATERIAL	DIA.	WATER HOLE DIA.	NOSE LENGTH	OVERALL LENGTH	FACE DIA.	OFFSET	TYPE
			A	B	C	D	E	F	
RWMA 5	16-38352	CMW@3	5/8	3/8	1-1/4	3	1/4	1-3/4	COLD FORMED