



FEATURES AND SPECIFICATIONS

Features and Benefits

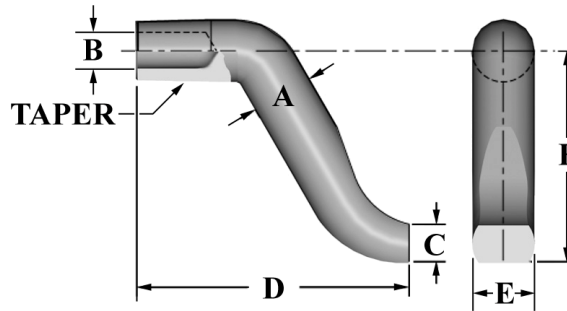
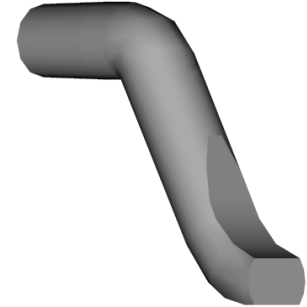
- Very strong bent electrodes for higher force applications
- Bent electrodes are for hard to reach locations
- Long lasting, heavy duty electrode
- Can be used in many job shop applications
- Works with all industry standard holders
- Can be redressed many times
- Optional material available upon request
CMW®28 & CMW®100

Use With

- Fits 5RW CMW standard holders

Mechanical

- Electrical conductivity up to 80% IACS
- Rockwell hardness up to 83 HRB



ELECTRODES
BENT

ORDERING INFORMATION AND DIMENSIONS

TAPER	PART NO.	MATERIAL	DIA.	WATER HOLE DIA.	FACE HEIGHT	OVERALL LENGTH	FACE WIDTH	OFFSET	TYPE
			A	B	C	D	E	F	
RWMA 5	16-38353	CMW®3	5/8	3/8	3/8	2-3/4	1/2	2-1/8	COLD FORMED