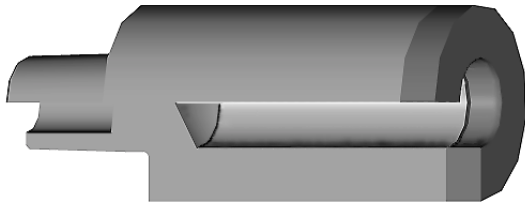




FEATURES AND SPECIFICATIONS



Features and Benefits

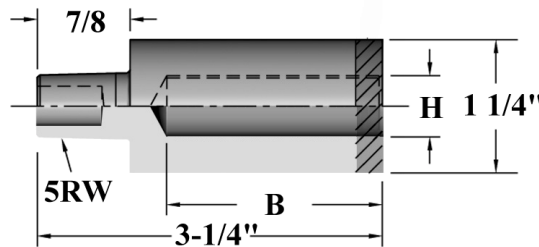
- Elkonite® 10W3 faced CMW®3 material
- Insulation sleeve made of anodized aluminum treated to 55 HRC on both I.D. & O.D. for wear resistance

Use With

- All tapered electrode holders

Mechanical

- Accepts external cooling chambers*



*External Electrode Cooling Chamber

ELECTRODES
STUD/NUT

ORDERING INFORMATION AND DIMENSIONS

TAPER	SCREW THREAD SIZE	INSULATION	ASSEMBLED ELECTRODE PART NO.		USE WITH COOLING CHAMBER*
		I.D. (H)	DEPTH (B)	1.00	
RWMA 5	--	.401	16-3726-4011	16-3726-4012	18-1343
	--	.427	16-3726-4271	16-3726-4272	
	.437	.444	16-3726-4441	16-3726-4442	
	.500	.502	16-3726-5021	16-3726-5022	
	--	.552	16-3726-5521	16-3726-5522	
	.625	.630	16-3726-6301	16-3726-6302	
	--	.676	16-3726-6761	16-3726-6762	
	--	.801	16-3726-8011	16-3726-8012	