



## FEATURES AND SPECIFICATIONS

### Features and Benefits

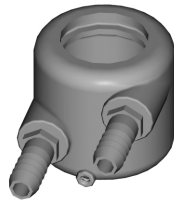
- Long life stud or bolt welding system
- Replaceable insulated stainless steel sleeve
- Replaceable long lasting ELKONITE® facing
- For stud or bolt sizes 6-8 mm, 1/4-3/8"
- Air port for flash removal

### Use With

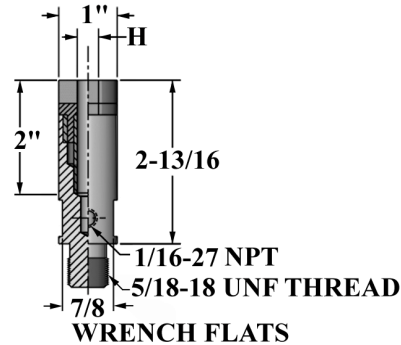
- Threaded adapter

### Mechanical

- Accepts external cooling chambers\*



\*External Electrode  
Cooling Chamber



ELECTRODES  
STUD/NUT

## ORDERING INFORMATION AND DIMENSIONS

THREAD SIZE	SCREW THREAD SIZE	SLEEVE ID H	PART NO.	CMW®3 BASE	CERAMIC COATED STAINLESS STEEL SLEEVE	ELKONITE® 10W3 FACED CAP	USE WITH COOLING CHAMBER*
5/8-18 UNF THREAD	6 mm	0.243	16-37525-243	16-37825	16-953243	16-37525-C243	18-1342
	0.250	0.254	16-37525-254	16-37825	16-953254	16-37525-C254	
	0.312	0.320	16-37525-320	16-37825	16-953320	16-37525-C320	
	8 mm	0.320	16-37525-320	16-37825	16-953320	16-37525-C320	
	0.375	0.380	16-37525-380	16-37825	16-953380	16-37525-C380	