



## CAPS, FLAT ("C" NOSE) MALE AND FEMALE ELECTRODES

### FEATURES AND SPECIFICATIONS

#### Features and Benefits

- Low cost electrode system
- Applications requiring frequent changeovers
- Available in RWMA 4-7 tapers
- Large weld face
- Works with all industry standard shanks
- Caps can be redressed
- Available in CMW®28, CMW®3, or CMW®328 material
- "C" Nose - Used for heat balancing and cosmetic welds
- Male version provides optimal cooling

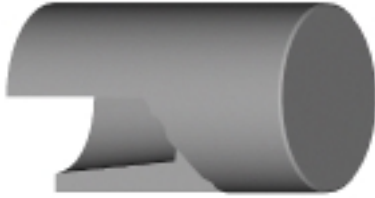
- Female version allows "dry" change when on blind hole shanks

#### Use With

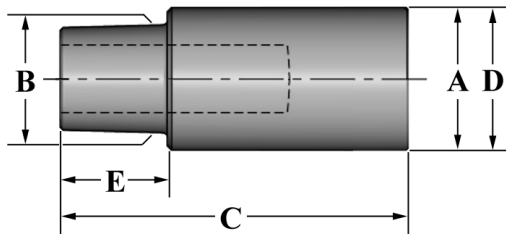
- CMW shanks (Male or Female)
- All CMW holders
- Dressing tools

#### Mechanical

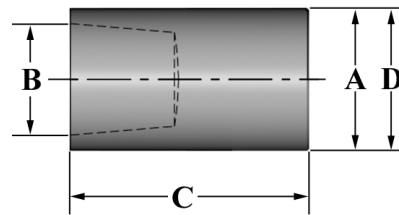
- Electrical conductivity up to 90% IACS
- Rockwell hardness up to 83 HRB



#### MALE



#### FEMALE



### ORDERING INFORMATION AND DIMENSIONS

STYLE	RWMA	ORDER NO.			DIMENSIONS (in inches)					USE WITH
		MATERIAL			WELD FACE A	GAGE LINE DIA. B	LENGTH C	O.D. D	GAGE LENGTH (MALE CAPS) E	SHANK
		CMW®28 CLASS 1	CMW®3 CLASS 2	CMW®328 CLASS 2						
MALE	4	MC14Z	MC24	MC24Z	0.500	0.3745	1.125	0.500	0.285	301XX
	5	MC15Z	MC25	MC25Z	0.625	0.4145	1.250	0.625	0.390	302XX
	6	MC16Z	MC26	MC26Z	0.750	0.5005	1.625	0.750	0.500	304XX
FEMALE	4	MPC14Z	MPC24	MPC24Z	0.500	0.3945	0.840	0.500	N/A	MP301XX
	5	MPC15Z	MPC25	MPC25Z	0.625	0.4951	0.880	0.625		MP302XX
	6	MPC16Z	MPC26	MPC26Z	0.750	0.6255	1.000	0.750		304XX

\*Taper Length for RWMA 4/5/6, Male = 3/8", 1/2", 5/8", Female = 7/8", 3/4", 7/8"