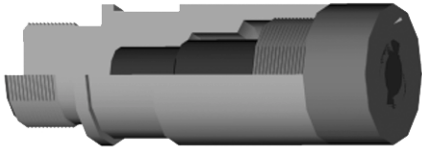




STUD WELDING ELECTRODES,
CHAMELEON MAX/LIFE™

FEATURES AND SPECIFICATIONS



Features and Benefits

- Long life stud or bolt welding system
- Replaceable insulated stainless steel sleeve
- Replaceable long lasting ELKONITE® facing
- For 10-12 mm, 7/16-5/8" studs or bolts
- For threaded holder systems
- Air port for flash removal

Use With

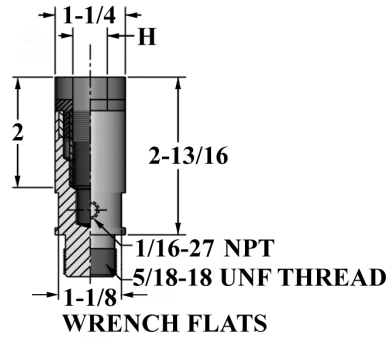
- Threaded adapter

Mechanical

- Accepts external cooling chambers*



*External Electrode Cooling Chamber



ORDERING INFORMATION AND DIMENSIONS

THREAD SIZE	SCREW THREAD SIZE	SLEEVE ID H	PART NO.	CMW®3 BASE	CERAMIC COATED STAINLESS STEEL SLEEVE	ELKONITE® 10W3 FACED CAP	USE WITH COOLING CHAMBER*
5/8-18 UNF THREAD	10 mm	0.399	16-37526-399	16-37526	16-953399	16-37526-C399	18-1343
	0.438	0.444	16-37526-444	16-37526	16-953444	16-37526-C444	
	12 mm	0.477	16-37526-477	16-37526	16-953477	16-37526-C477	
	0.500	0.502	16-37526-502	16-37526	16-953502	16-37526-C502	
	0.625	0.630	16-37526-630	16-37526	16-953630	16-37526-C630	