



FEATURES AND SPECIFICATIONS

Features and Benefits

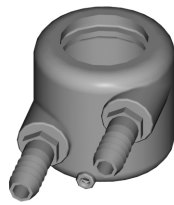
- Long life stud or bold welding system
- Replaceable insulated stainless steel sleeve
- Replaceable long lasting ELKONITE® facing
- For stud or bolt sizes 4-6 mm, #4 - 1/4"
- Air port for flash removal

Use With

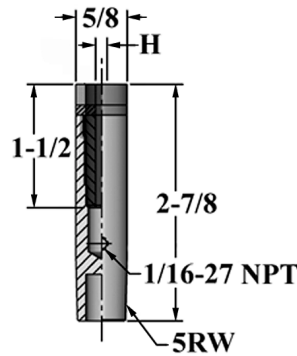
- Threaded adapter

Mechanical

- Accepts external cooling chambers*



*External Electrode Cooling Chamber



ELECTRODES
STUD/NUT

ORDERING INFORMATION AND DIMENSIONS

TAPER	SCREW THREAD SIZE	SLEEVE ID H	PART NO.	CMW®3 BASE	CERAMIC COATED STAINLESS STEEL SLEEVE	ELKONITE® 10W3 FACED CAP	USE WITH COOLING CHAMBER*
RWMA 5	#4	0.116	16-37325-116	16-37325	16-953116	16-37325-C116	18-1340
	#5	0.132	16-37325-132	16-37325	16-953132	16-37325-C132	
	#6	0.140	16-37325-140	16-37325	16-953140	16-37325-C140	
	#8	0.169	16-37325-169	16-37325	16-953169	16-37325-C169	
	4 mm	0.169	16-37325-169	16-37325	16-953169	16-37325-C169	
	#10	0.191	16-37325-191	16-37325	16-953191	16-37325-C191	
	5 mm	0.204	16-37325-204	16-37325	16-953204	16-37325-C204	
	#12	0.220	16-37325-220	16-37325	16-953220	16-37325-C220	
	6 mm	0.243	16-37325-243	16-37325	16-953243S	16-37325-C243	
	0.250	0.254	16-37325-254	16-37325	16-953254S	16-37325-C254	