



FEATURES AND SPECIFICATIONS

Features and Benefits

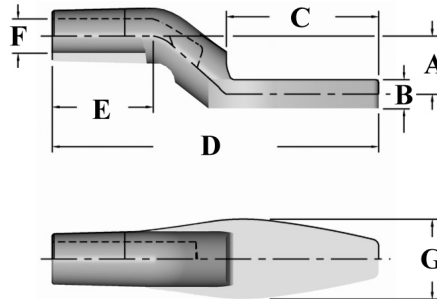
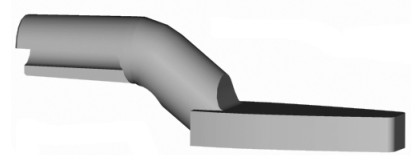
- Long lasting, heavy duty electrode
- Can be used in many job shop applications
- Works with all industry standard holders
- Can be redressed many times
- Options available in CMW®28 or CMW®100 material
- Thin cold formed electrode for use in confined spaces

Use With

- 4RW or 5RW CMW Holders

Mechanical

- Electrical conductivity up to 80% IACS
- Rockwell Hardness up to 83 HRB



ORDERING INFORMATION AND DIMENSIONS

TAPER	A	B	PART NO.	MATERIAL	C	D	E	F	G	TYPE
4	1/2	1/4	16-38202	CMW 3	1-1/4	2-13/16	7/8	9/32	11/16	COLD FORMED
5		5/16	16-382102			3-1/16	3/4	3/8	15/16	

ELECTRODES
SPECIALTY