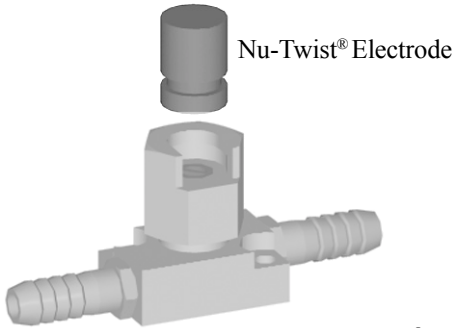




**FEATURES AND SPECIFICATIONS**



800 Series Nu-twist®  
Adapter (See page 113)

**Features and Benefits**

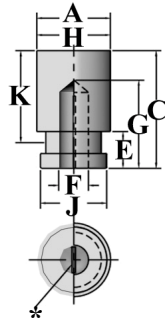
- Locked into place with hexagon nut
- Easily changed
- Silver plated contact surface for maximum conductivity
- Choice of CMW®3 or CMW®100 material

**Use With**

- Nu-Twist® adapters (See page 113)

**Mechanical**

- Electrode face can be modified to provide faces required for most welding applications



\* Water baffle is used in electrodes over 1” long to assure water circulation.

**ORDERING INFORMATION AND DIMENSIONS**

SIZE	TYPE	ELECTRODE PART NO.		DIMENSIONS (in inches)									
				H	A	C	E	F	G	J	K		
				BODY DIA.	WELDING FACE DIA.	OVERALL LENGTH	ADAPTER CLEARANCE	WATER HOLE DIA.	WATER HOLE DEPTH	ELECTRODE SEAT DIA.	ELKONITE EXT. FROM ADAPTER		
1	0 FLAT	338750	538750	1/2	1/2	3/4	N/A	1/4	3/8	.625	1/2		
		338030	538030			1-1/2			1-1/8		1-1/4		
	0 TRUNC.	378750	578750		1/4	3/4			1-1/2		3/8	1/2	
		378030	578030								1-1/8	1-1/4	
	FLAT	338751	538751		5/8	5/8			3/4		5/16	3/8	1/2
		338030	538030						1-1/2			1-1/8	1-1/4
2	FLAT	338012	538012	1-1/4	1-1/4	1	5/8	1/2	1.125	1/2			
		338052	538052			2				1-1/2	1-1/2		
4	FLAT	338014	538014	1-3/4	1-3/4	1	5/8	3/4	1.625	1/2			
		338054	538054			2				1-1/2	1-1/2		