



**FEATURES AND SPECIFICATIONS**

**Features and Benefits**

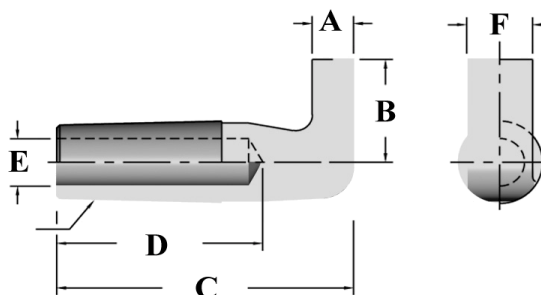
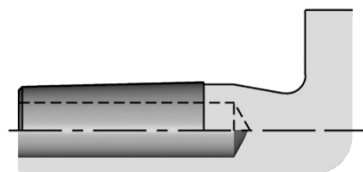
- Very strong cast electrode at right angle for hard to reach applications
- CMW@3 material

**Use With**

- 5RW CMW Holders

**Mechanical**

- Electrical conductivity up to 90% IACS
- Rockwell hardness up to 100 HRB



**ORDERING INFORMATION AND DIMENSIONS**

RW TAPER	A	B	PART NO.	MATERIAL	C	D	E	F	TYPE
5	5/16	13/16	16-382120	CMW 3	2-1/4	1-9/16	3/8	1/2	CASTING

ELECTRODES  
SPECIALTY