



FEATURES AND SPECIFICATIONS

Features and Benefits

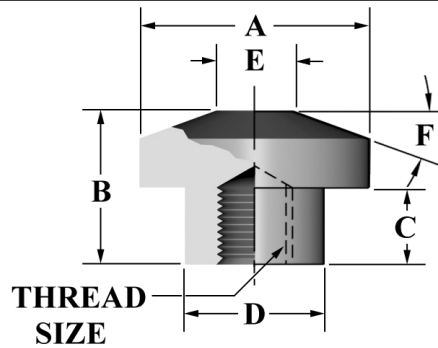
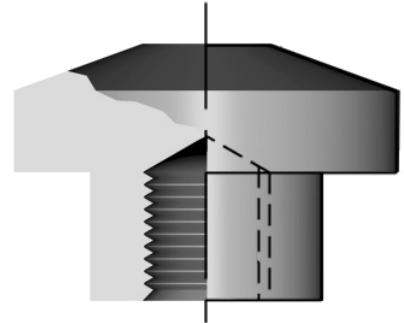
- Button type electrodes
- CMW®28, CMW®3, or CMW®100
- Used in tight fitting locations where larger electrodes will not fit

Use With

- Series 900 and 950 holders

Mechanical

- CMW®28 - high conductivity
- CMW®3 - Good balance of conductivity and hardness
- CMW®100 - High hardness



ORDERING INFORMATION AND DIMENSIONS

THREAD SIZE	MATERIAL	PART NO.	A	B	C	D	E	F
#10-32	CMW 28	18-971	9/16	3/8	3/16	0.341	3/16	20 (degrees)
	CMW 3	18-981						
	CMW 100	18-991						

ELECTRODES
SPECIALTY