



FEATURES AND SPECIFICATIONS

Features and Benefits

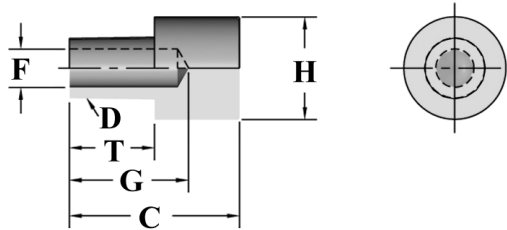
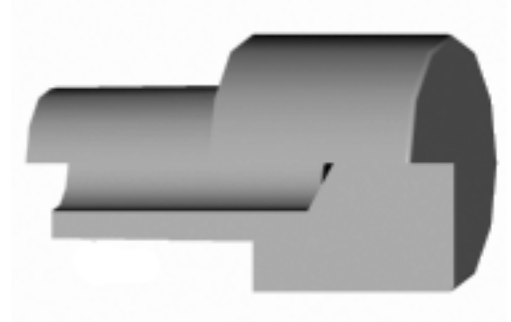
- Elkonite® 10W3 faced electrode
- Large flat face

Use With

- All tapered electrode holders

Mechanical

- CMW®3 shank



ORDERING INFORMATION AND DIMENSIONS

D TAPER	DIMENSIONS (in inches)		DIMENSIONS (in inches)				WELD FACE MATERIAL
	H WELD FACE DIA.	PART NO.	C OVERALL LENGTH	T SHANK LENGTH	WATER HOLE		
					F DIA.	G DEPTH	
4	3/4	16-3012	1-1/4	5/8	9/32	7/8	CMW3
	1	16-3010					
	1-1/4	16-3030					