



FEATURES AND SPECIFICATIONS

Features and Benefits

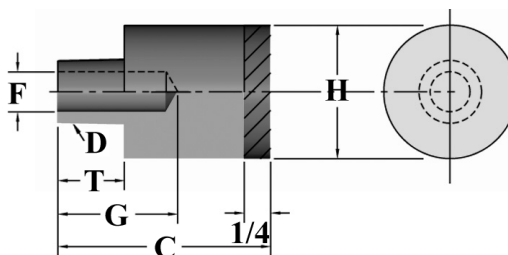
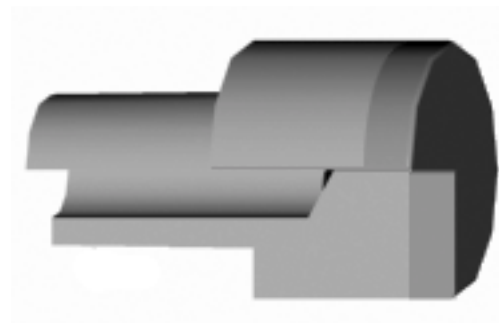
- Elkonite® 10W3 faced electrode
- Large flat face

Use With

- All tapered electrode holders

Mechanical

- CMW®3 shank



ORDERING INFORMATION AND DIMENSIONS

D TAPER	DIMENSIONS (in inches)		PART NO.	DIMENSIONS (in inches)			WELD FACE MATERIAL
	C OVERALL LENGTH	H WELD FACE DIA.		WATER HOLE		T SHANK LENGTH	
				G DEPTH	F DIA.		
5	2	1	16-1392	1-1/2	3/8	7/8	ELKONITE 10W3
	3		16-1393	5/8			
	2	1-1/4	16-1394	1-1/2			
	3-1/4		16-1395	5/8			

ELECTRODES
SPECIALTY