



HOLDERS (1100 SERIES ADJUST-A-PRESSURE) WATER COOLED; LOW INERTIA  
(1150 SERIES ADJUST-A-ANGLE) ADAPTER

**FEATURES AND SPECIFICATIONS**

**Features and Benefits**

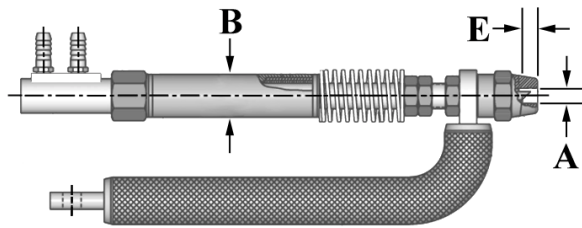
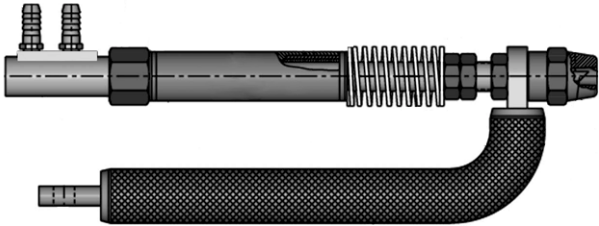
- Used for multiple spot welds at one time
- Low inertia series holder designed for quick follow-up in projection welding
- Adjusted to very low forces for resistance brazing
- Standard is 1-500 pound range
- Supplied with cable

**Use With**

- Standard electrodes

**Mechanical**

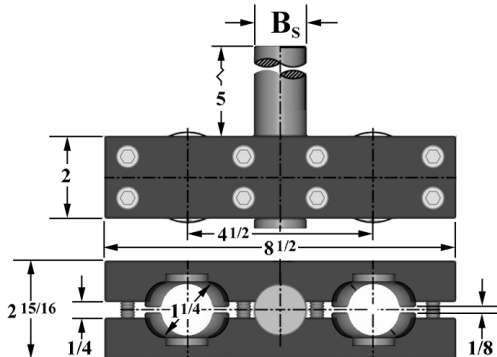
- Water cooled
- Forces from 1-500#



**ORDERING INFORMATION AND DIMENSIONS**

HOLDERS

D RWMA TAPER	B BARREL DIA. (inches)	PART NO. HOLDER ASSEMBLY	A MAJOR TAPER DIA.	E STANDARD ELECTRODE TAPER ENGAGEMENT	PRESSURE RANGE (POUNDS)	1150 ADJUST-A-ANGLE ADAPTER
4	1-1/4	18-1101	0.463	1/2	TO 500	See Table Below
	1-1/2	18-1103				
5	1-1/4	18-1102	0.625	3/4		See Table Below
	1-1/2	18-1104				



**1150 Series Adjust-A-Angle Adapters**

ADAPTER ASSEMBLY PART NO.	SHANK DIA. B <sub>s</sub>
18-1154	1
18-1155	1-1/4
18-1156	1-1/2

**Use With**

- 1100 series
- Straight holders 100, 200, & 300 series