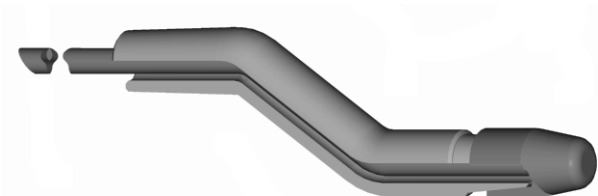




**FEATURES AND SPECIFICATIONS**



**Features and Benefits**

- Shank/Cap System reduces electrode expenses in high volume and gun applications
- Use with female caps
- Made of CMW®3 material
- Bent shanks are used for hard to reach applications using female caps
- Provided with water tube

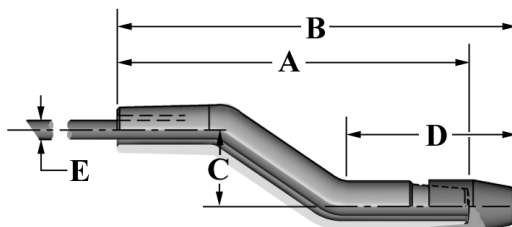
**Use With**

- Female cap electrodes

**Mechanical**

- Electrical conductivity up to 80% IACS
- Rockwell hardness up to 83 HRB

SHANKS



*BENT DIMENSIONS FOR REFERENCE ONLY*

**ORDERING INFORMATION AND DIMENSIONS**

RWMA TAPER	DIMENSIONS (in inches)		PART NO.	DIMENSIONS (in inches)			
	A*	B*		C*	D	E	
4	2.62	3.28	MP3019-08	0.50	1.438	0.182	
	2.56	3.22	MP3019-12	0.75			
	2.81	3.47	MP30112-12	0.75			
	2.37	3.03	MP30112-16	1.00			
	2.87	3.53	MP30116-16	1.00			
	2.60	3.28	MP30116-20	1.25			
5	2.58	3.20	MP3029-08	0.50		1.438	0.245
	2.60	3.12	MP3029-12	0.75			
	2.77	3.44	MP30212-12	0.75			
	2.33	3.00	MP30212-16	1.00			
	3.00	3.66	MP30214-12	0.75			
	2.81	3.48	MP30214-16	1.00			
	2.83	3.49	MP30216-16	1.00			
	2.77	3.43	MP30216-20	1.25			
6	2.69	3.30	MP3049-08	0.50	1.438	0.245	
	2.81	3.42	MP30412-12	0.75			
	2.94	3.55	MP30414-12	0.75			
	3.06	3.67	MP30416-16	1.00			
	3.25	3.86	MP30420-20	1.25			

\* Custom sizes are available, call for quote