

CAPS, DOME (“B” NOSE)
MALE AND FEMALE ELECTRODES



FEATURES AND SPECIFICATIONS

Features and Benefits

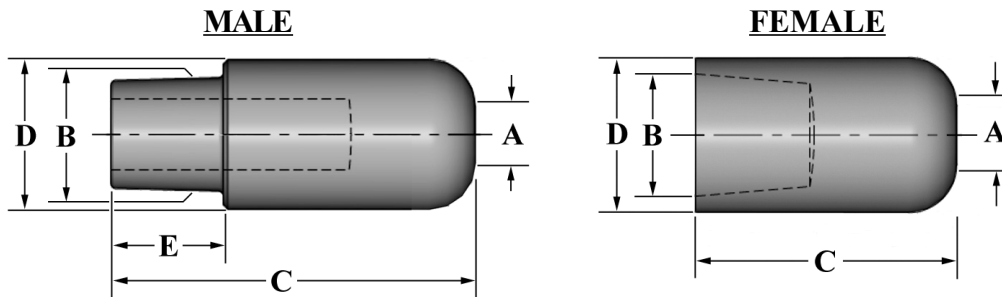
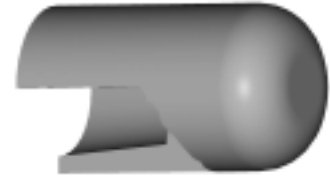
- Low cost electrode system
- Applications requiring frequent changeovers
- Available in RWMA 4-7 tapers
- Large weld face
- Works with all industry standard shanks
- Caps can be redressed
- Available in CMW®28, CMW®3, or CMW®328 material
- ”B” Nose - Good in most applications
- Male version provides optimal cooling
- Female version allows “dry” change when on blind hole shanks

Use With

- CMW shanks (Male or Female)
- All CMW holders
- Dressing tools

Mechanical

- Electrical conductivity up to 90% IACS
- Rockwell hardness up to 83 HRB



ORDERING INFORMATION AND DIMENSIONS

STYLE	RWMA	ORDER NO.			DIMENSIONS (in inches)					USE WITH
		MATERIAL			WELD FACE	GAGE LINE DIA.	LENGTH	O.D.	GAGE LENGTH (MALE CAPS)	SHANK
		CMW®28 CLASS 1	CMW®3 CLASS 2	CMW®328 CLASS 2	A	B	C	D	E	
MALE	4	MB14Z	MB24	MB24Z	0.188	0.3745	1.125	0.500	0.285	301XX
	5	MB15Z	MB25	MB25Z	0.188	0.4145	1.250	0.625	0.390	302XX
	6	MB16Z	MB26	MB26Z	0.250	0.5005	1.625	0.750	0.500	304XX
FEMALE	4	MPB14Z	MPB24	MPB24Z	0.188	0.3945	0.840	0.500	N/A	MP301XX
	5	MPB15Z	MPB25	MPB25Z	0.188	0.4951	0.880	0.625		MP302XX
	6	MPB16Z	MPB26	MPB26Z	0.250	0.6255	1.000	0.750		MP304XX

*Taper Length for RWMA 4/5/6, Male = 3/8”, 1/2”, 5/8”, Female = 7/8”, 3/4”, 7/8”