



FEATURES AND SPECIFICATIONS

Features and Benefits

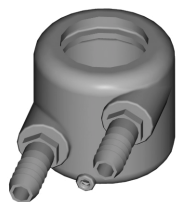
- Long life nut welding electrode system with retractable locators
- Replaceable insulated stainless steel locator pins
- Replaceable long life ELKONITE® face
- For threaded holders
- For 10mm-12mm nuts

Use With

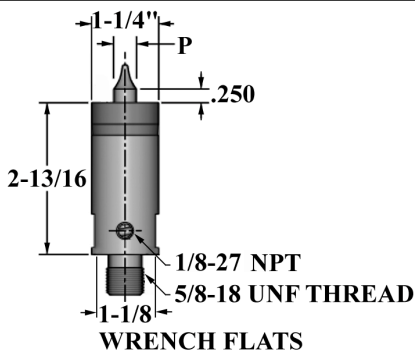
- Threaded adapters in platen mounted holder in special fixtures

Mechanical

- Accepts external cooling chambers*



*External Electrode Cooling Chamber



ELECTRODES
STUD/NUT

ORDERING INFORMATION AND DIMENSIONS

THREAD SIZE	SCREW THREAD SIZE	PIN DIA. P	PART NO.	CMW@3 BASE	SPRING	CERAMIC COATED STAINLESS STEEL PIN	ELKONITE® 10W3 FACED CAP	USE WITH COOLING CHAMBER*
5/8-18 UNF THREAD	10 mm	0.423	16-37826-M10	16-37826	16-950065-01	16-950064-M10	16-37826-CM10	18-1343
	11 mm	0.463	16-37826-M11	16-37826	16-950065-01	16-950064-M11	16-37826-CM11	
	12 mm	0.502	16-37826-M12	16-37826	16-950065-01	16-950064-M12	16-37826-CM12	