



FEATURES AND SPECIFICATIONS

Features and Benefits

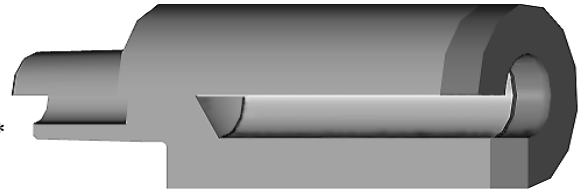
- Elkonite® 10W3 faced CMW®3 material
- Insulation sleeve made anodized aluminum treated to 55 HRC on both I.D. & O.D. for wear resistance

Use With

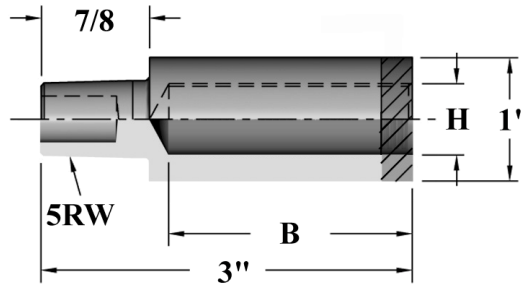
- All tapered electrode holders

Mechanical

- Accepts external cooling chambers*



*External Electrode Cooling Chamber



ELECTRODES
STUD/NUT

ORDERING INFORMATION AND DIMENSIONS

TAPER	SCREW THREAD SIZE	INSULATION	ASSEMBLED ELECTRODE PART NO.		USE WITH COOLING CHAMBER*	
		I.D. (H)	DEPTH (B)			
RWMA 5	.250		.750	1.500	18-1342	
			16-3725-2541	16-3725-2542		
	--		1.00	2.00		
			.277	16-3725-2771		16-3725-2772
			.317 (8 mm)	16-3725-3171		16-3725-3172
			.339	16-3725-3391		16-3725-3392
			.365	16-3725-3651		16-3725-3652
.375	.380	16-3725-3801	16-3725-3802			