



FEATURES AND SPECIFICATIONS

Features and Benefits

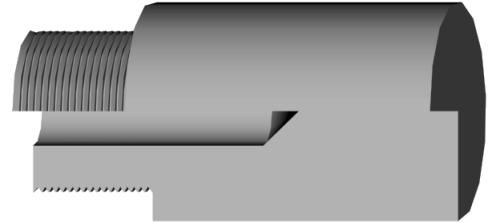
- CMW®3 material
- Heavy wall construction for good heat dissipation
- Threaded for good conductivity

Use With

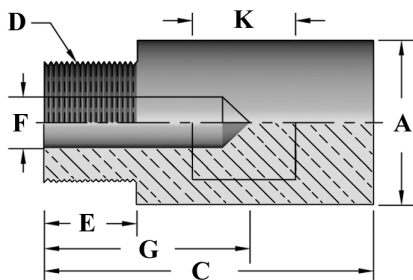
- Threaded adapters

Mechanical

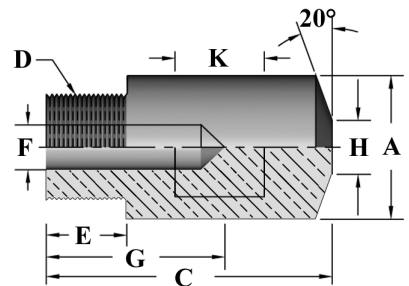
- Wrench flats



FLAT FACED



TRUNCATED FACED



ORDERING INFORMATION AND DIMENSIONS

ELECTRODES
SPECIALTY

FACE	DIMENSIONS (in inches)			DIMENSIONS (in inches)							
	H WELDING FACE DIA.	A MAJOR DIA.	PART NO.	D THREAD SIZE	C OVERALL LENGTH	E THREAD DEPTH	G WATER HOLE DEPTH	F WATER HOLE DIA.	OVER WRENCH FLATS	K WRENCH FLAT LENGTH	
FLAT	7/8	7/8	330507	5/8-18	2	9/16	1-1/4	5/16	3/4	5/8	
	1	1	330508						7/8		
	3/4	3/4	335506	5/8							
	7/8	7/8	335507	5/8-11		15/32		3/4	3/8	3/4	7/8
	1	1	335508	3/4-10		5/8		1/2	1	7/8	
	1-1/4	1-1/4	335510			3/4		1-1/4	3/4		
	1-1/2	1-1/2	335512			7/8-9		1	7/8		
TRUNCATED	1/4	3/4	325506	5/8-11	2	15/32	1-1/4	5/16	5/8	1/2	
	5/16	7/8	325507						3/4	5/8	
	3/8	1	325508	3/4-10				5/8	3/8	7/8	5/8
	1/2	1-1/4	325510			1				3/4	