

CAPS, OFFSET "D" NOSE  
MALE AND FEMALE ELECTRODES



CAPS

**FEATURES AND SPECIFICATIONS**

**Features and Benefits**

- Low cost electrode system
- Applications requiring frequent changeovers
- Available in RWMA 4-7 tapers
- Large weld face
- Works with all industry standard shanks
- Caps can be redressed
- Available in CMW®28, CMW®3, or CMW®328 material
- "D" Nose - Used in hard to reach and small areas or small flanges
- Male version provides optimal cooling

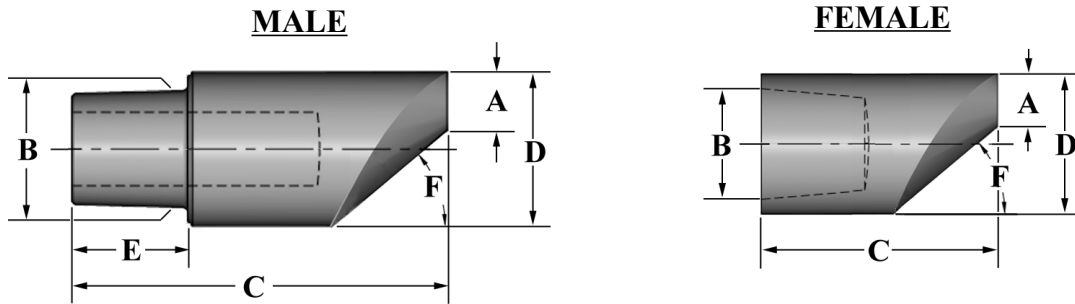
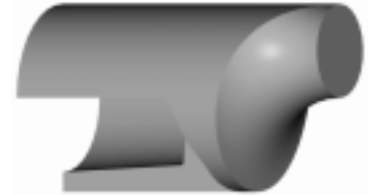
- Female version allows "dry" change when on blind hole shanks

**Use With**

- CMW shanks (Male or Female)
- All CMW Holders
- Dressing Tools

**Mechanical**

- Electrical conductivity up to 90% IACS
- Rockwell hardness up to 83 HRB



**ORDERING INFORMATION AND DIMENSIONS**

STYLE	RWMA	ORDER NO.			DIMENSIONS (in inches)						USE WITH
		MATERIAL			WELD FACE	GAGE LINE DIA.	LENGTH	O.D.	GAGE LENGTH (MALE CAPS)	FACE ANGLE	SHANK
		CMW®28 CLASS 1	CMW®3 CLASS 2	CMW®328 CLASS 2							
MALE	4	MD14Z	MD24	MD24Z	0.188	0.3745	1.125	0.500	0.285	40°	301XX
	5	MD15Z	MD25	MD25Z	0.250	0.4145	1.250	0.625	0.390	40°	302XX
	6	MD16Z	MD26	MD26Z	0.313	0.5005	1.625	0.750	0.500	45°	304XX
FEMALE	4	MPD14Z	MPD24	MPD24Z	0.188	0.3945	0.840	0.500	N/A	40°	MP301XX
	5	MPD15Z	MPD25	MPD25Z	0.188	0.4951	0.880	0.625		40°	MP302XX
	6	MPD16Z	MPD26	MPD26Z	0.313	0.6255	1.000	0.750		45°	MP304XX

\*Taper Length for RWMA 4/5/6, Male = 3/8", 1/2", 5/8", Female = 7/8", 3/4", 7/8"