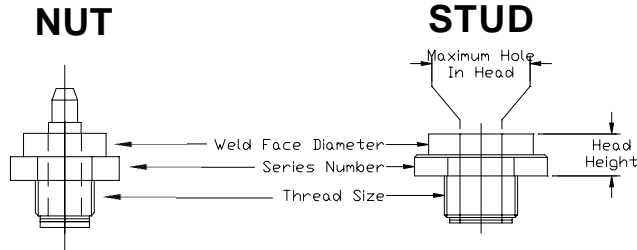


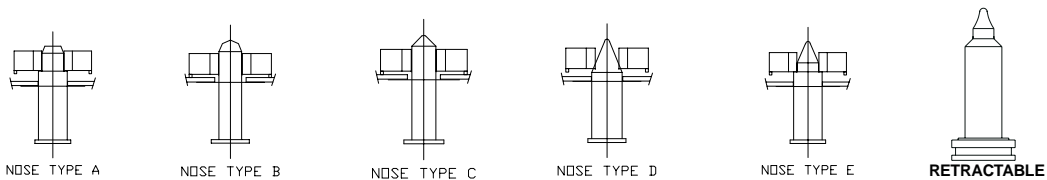
### TCL HEADS & COMPONENTS



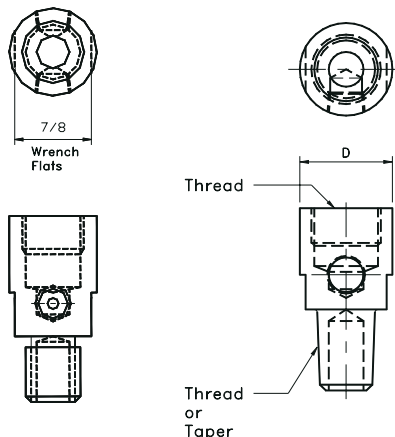
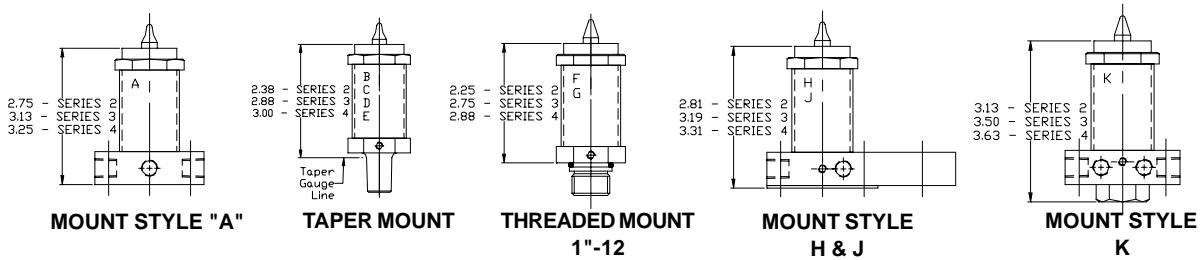
SERIES	THREAD SIZE	WELD FACE DIA.	HEAD HEIGHT	MAX. HOLE DIA.
TCL-201	5/8-18"	7/8"	1/2"	.427 (10.85) ID
TCL-301	7/8-14"	1-1/4"	1/2"	.642 (16.31) ID
TCL-401	1-1/8-12"	1-1/2"	5/8"	.852 (21.64) ID

\*specials available in round stock or hex stock

### WELD NUT PIN NOSE STYLES



### STANDARD BODY & MOUNTING STYLES



INFORMATION REQUIRED TO ORDER "TCL" PARTS			
	TCL HEAD	TCL PIN	STUD
Nut type (piloted, Non-oiloted, ect)		X	
Nut style(sq., hex, round)		X	
Head Series		X	X
Hole in stamping	X	X	
Hole in nut	X	X	X
Stamping thickness	X	X	
Hand load		X	
Auto load		X	
Air / Spring operated		X	
Retractable (Air only)		X	
Length of stud	X		X
Head dia. Of stud	X		X
Stud dia	X		X

CONSULT FACTORY FOR ADDITIONAL INFORMATION ON THESE ITEMS