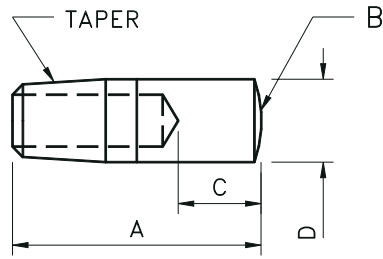


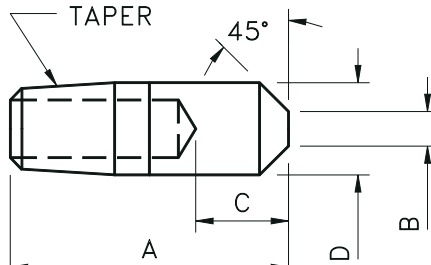
## RADIUS AND TRUNCATED TIPS

### RADIUS AND TRUNCATED TIPS



**RADIUS**

	#130 CODE NO.	#100 CODE NO.	OVERALL LENGTH	WELD FACE DIA.	FACE TO WATER HOLE	MAJOR DIAMETER
	CLASS 2	CLASS 1	A	B	C	D
4RW / #1MT	TC-244	TC-144	1	3/16	.500	.482 OR 0.5
	TC-246	TC-146	1-1/2			
	TC-248	TC-148	2			
	TC-2410	TC-1410	2-1/2			
	TC-2412	TC-1412	3			
5RW / #2MT	TC-256	TC-156	1-1/2	1/4	3/4	.625
	TC-258	TC-158	2			
	TC-2510	TC-1510	2-1/2			
	TC-2512	TC-1512	3			
	TC-2514	TC-1514	3-1/2			
	TC-2516	TC-1516	4			
7RW / #3MT	TC-278	TC-178	2	5/16	3/4	.875
	TC-2712	TC-1712	3			
	TC-2716	TC-1716	4			



**TRUNCATED**

	#130 CODE NO.	#100 CODE NO.	OVERALL LENGTH	WELD FACE DIA.	FACE TO WATER HOLE	MAJOR DIAMETER
	CLASS 2	CLASS 1	A	B	C	D
4RW / #1MT	TC-244	TC-144	1	3/16	.500	.482 OR 0.5
	TC-246	TC-146	1-1/2			
	TC-248	TC-148	2			
	TC-2410	TC-1410	2-1/2			
	TC-2412	TC-1412	3			
5RW / #2MT	TC-256	TC-156	1-1/2	1/4	3/4	.625
	TC-258	TC-158	2			
	TC-2510	TC-1510	2-1/2			
	TC-2512	TC-1512	3			
	TC-2514	TC-1514	3-1/2			
	TC-2516	TC-1516	4			
7RW / #3MT	TC-278	TC-178	2	5/16	3/4	.875
	TC-2712	TC-1712	3			
	TC-2716	TC-1716	4			